

DESIGN – PRODUCTION – SALES – ASSEMBLY – SERVICE
RENEWABLE AND DC&AC RESERVE
BACKUP POWER SUPPLY SYSTEMS

UPS SERIES SAURUS 60 – 200 kVA ONLINE DOUBLE CONVERSION



Let`See What We Do?

The ALBAT SAURUS UPS series includes double conversion tower UPS with powers from 60kVA up to 200kVA. SAURUS UPSs are available in three sizes: 60kVA, from 80kVA to 120kVA and from 160kVA to 200kVA.

The SAURUS three phase UPS series uses a centralized modular design, allowing for future expansion of the UPS. These UPSs can be expanded in power directly on site and from the display.

The SAURUS UPSs offer great flexibility in the number of batteries and high overload capacity, with the innovative self-cleaning function that reduces the risk of dust accumulation on the boards.

The system also includes the free contact card for alarms. The batteries are common for parallel systems, with only one battery pack for two N+1 UPSs, and the battery configurations range from 14 to 24 monoblocks ($\pm 168 \sim \pm 288 \text{Vdc}$).

Main Features:

ALBAT'S UPS Series SAURUS 60-200 kVA represents a perfect solution for a wide range application in the:

- Data Center,
- Health Care,
- Transport,
- Industry,
- Server.

GET IN TOUCH

albat@albat.ba
www.albat.ba

Albat d.o.o. Sarajevo
Pavla Lukača 7, 71000 Sarajevo, B&H

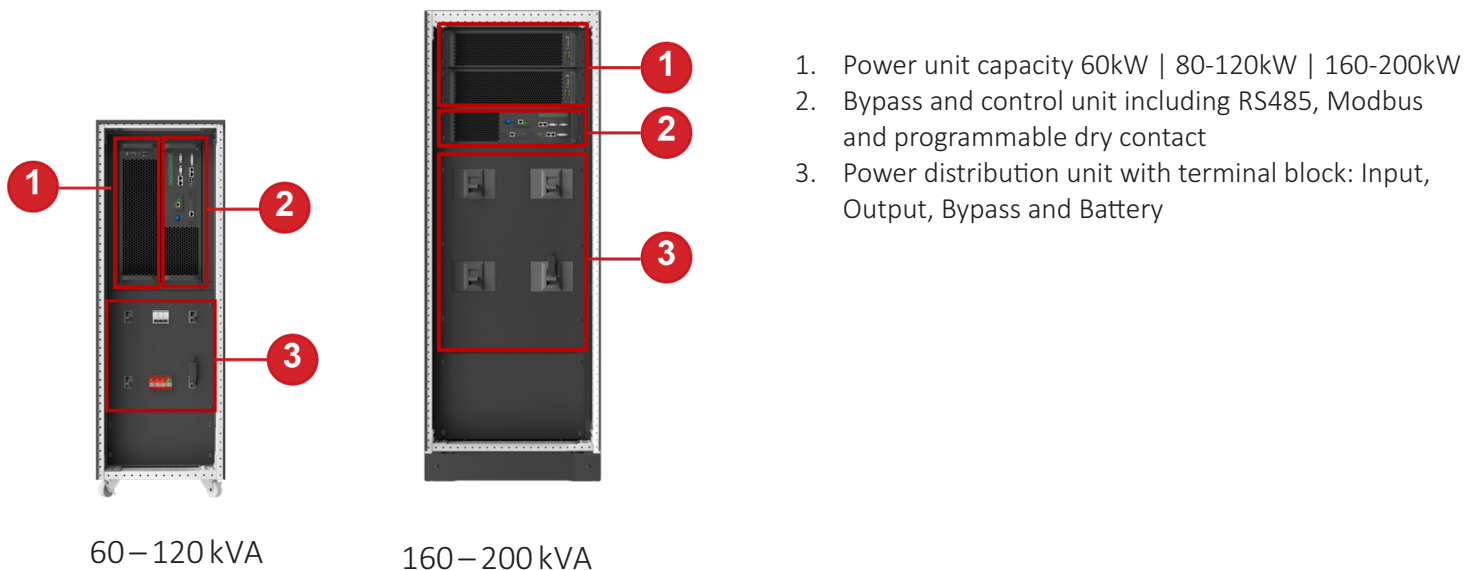
tel.: +387 33 764 075, 764 076
fax.: +387 33 764 077



Main Features:

- SAURUS UPSs feature ECO mode with efficiency up to 99%, configurable from the display. Furthermore, the SAURUS UPSs are equipped with many options and accessories, including the SNMP network card for the control and monitoring of the UPS, the parallel kit, the additional free contact card, the battery cabinets, the of the battery, the N+X configuration in parallel, the isolation transformer.
- The SAURUS UPSs have an output power factor of 1 and maximum AC\AC efficiency up to 97%, thanks to the 3 IGBT levels of the inverter. Furthermore, the advanced control with double redundant DSP and the fully tropicalized electronic boards make these UPSs highly reliable.
- The SAURUS UPSs are equipped with advanced communication for installation and operation with diesel generators and dry contact card alarms, configurable from the display, with periodic graphical recording of the waveforms relating to the inverter, rectifier and control. In addition, SAURUS UPSs are equipped with bypass and control units, standard RS485 communications, Modbus and programmable dry contact card, as well as Input, Output and Bypass switches.

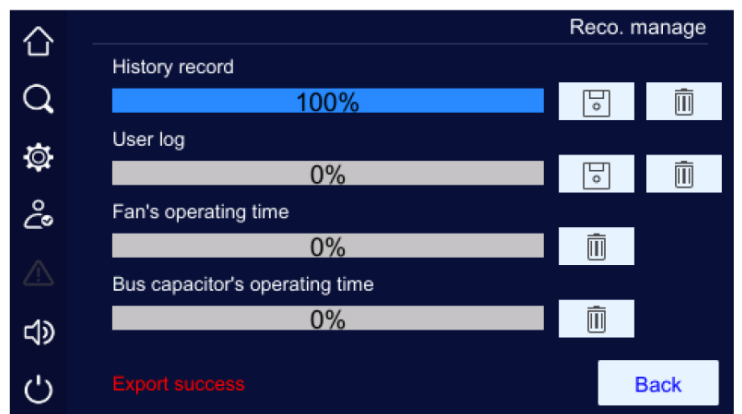
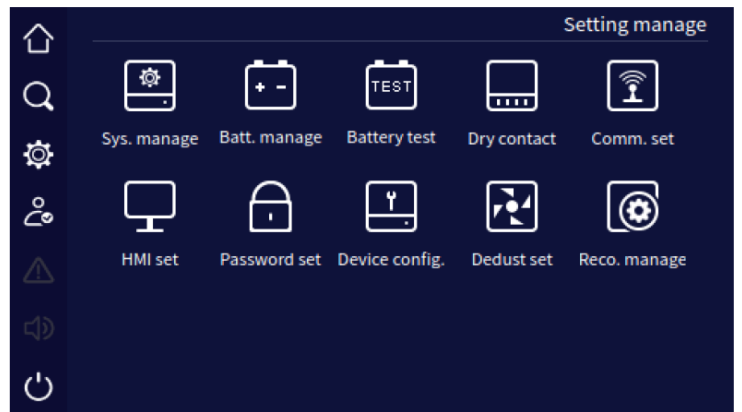
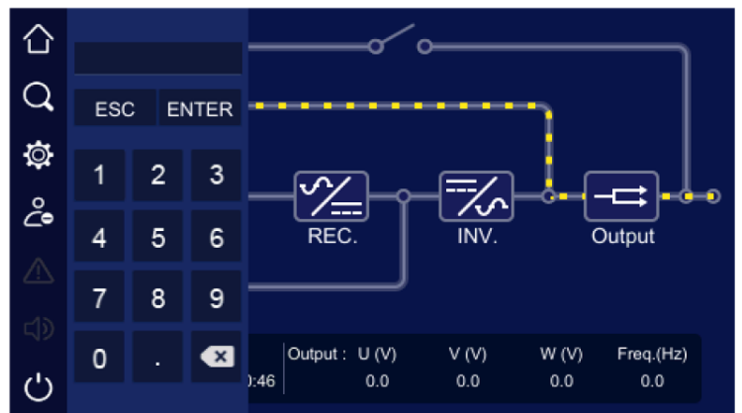
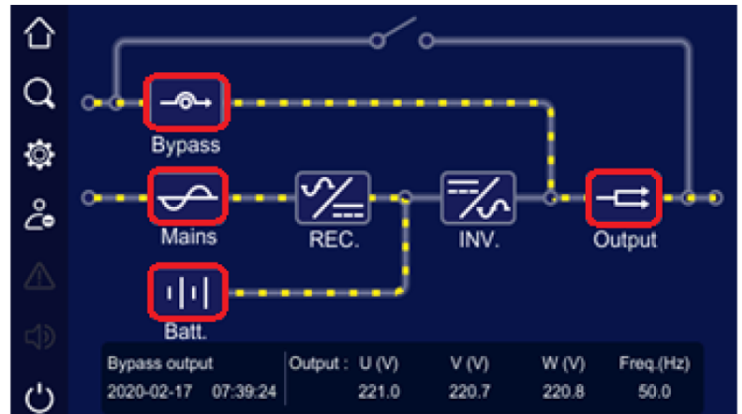
Availability:



GET IN TOUCH

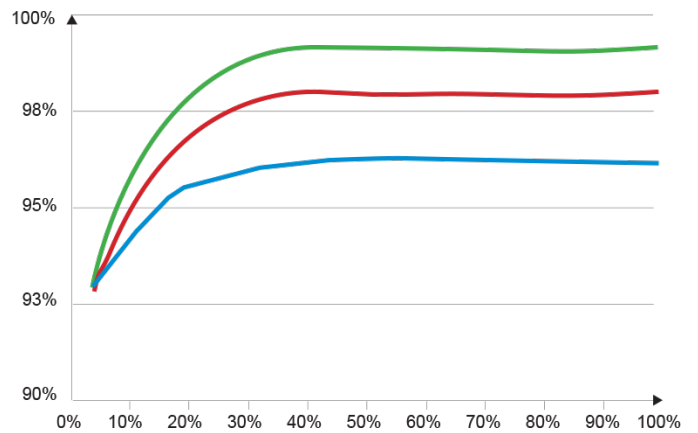
SETTINGS FROM DISPLAY:

- Access to the menu via different password levels (User, Technician and Manufacturer)
- Configuration for input, output, bypass, batteries, communications, language and operating modes
- Periodic self-cleaning function, to expel impurities and reduce the risk of breakdowns
- Large memory up to 10,000 events downloadable via the USB port integrated in the UPS
- Advanced communication for installation and operation with diesel generators
- Alarms from clean contact card, configurable from display
- Periodic graphic recording of inverter, rectifier and control waveforms.

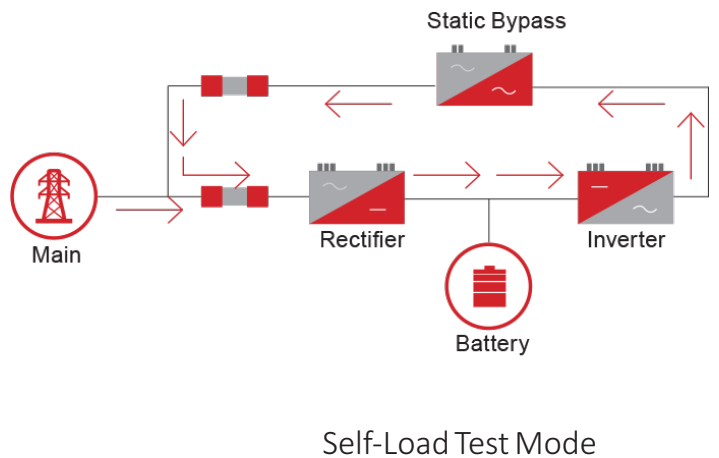
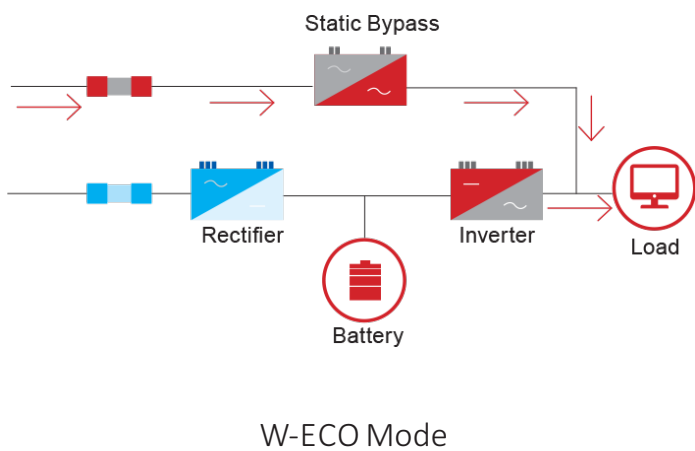
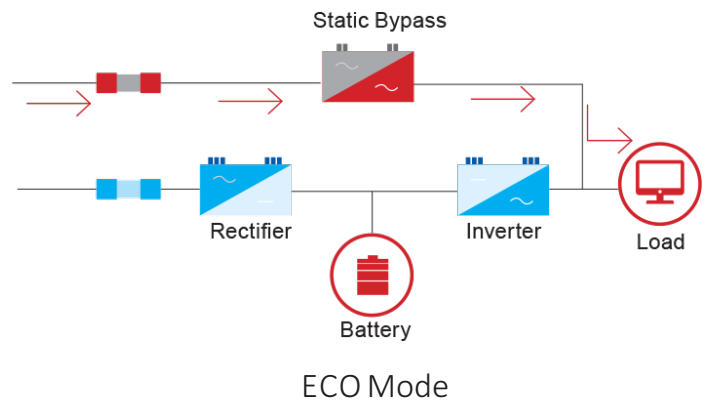
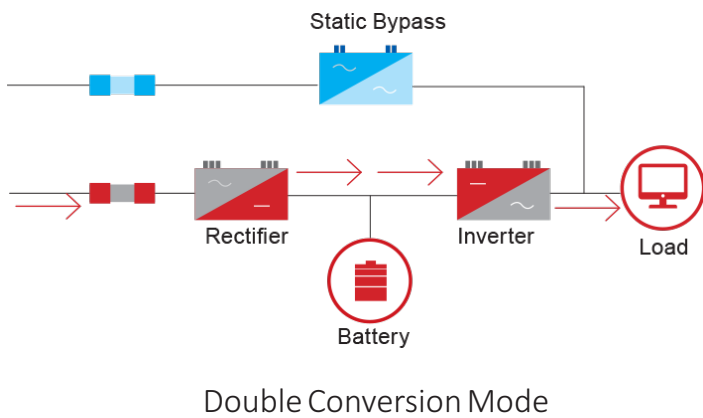


GET IN TOUCH

SMART-SLEEP PARALLEL INTELLIGENCE:



OPERATING MODES:



GET IN TOUCH

FREQUENCY CONVERTER:

- 50Hz-60Hz or 60Hz-50Hz converter mode
- Possibility of disabling the static bypass and the DC power supply of the inverter.



STANDARD AND COMMUNICATIONS:

- Clean contact card with 5 alarms
- Bypass switch for maintenance
- EPO emergency release button on the front, remote clean contact on the back
- Starting from battery by means of a specific button
- Integrated RS485 and Modbus communication port
- Protection against reverse polarity of the batteries
- SNMP network card for remote control and monitoring (optional)
- NC \ NO dry contact card for further 12 alarms (optional)

EXCELLENT PERFORMANCE:

- Efficiency higher than 95% even at low loads
- Maximum output tolerance, ability to operate with 100% unbalanced loads
- Double input with wide tolerance, compatible with diesel generators
- Advanced 3-stage battery charging and maintenance system
- Redundant and hot extractable power modules (rectifier and inverter)
- Centralized bypass module with battery start button

MORE OPTIONS:

- Flexible Network Management: SNMP
- Expanded dry contact kit (4 in 4 out)
- BMS kit for lithium battery communication
- Intelligent Battery Monitoring System
- Battery tripping kit
- N+X in parallel
- Input and output isolation transformer
- SPD: C Grade
- Battery Charge Temperature Compensation

GET IN TOUCH

TECHNICAL SPECIFICATION

| MODELS | SAURUS 60 | SAURUS 80 | SAURUS 100 | SAURUS 120 | SAURUS 160 | SAURUS 200 |
|----------------------------------|--|-----------|------------|------------------|------------|------------|
| INPUT | | | | | | |
| VOLTAGE | 380/400/415 (138-485 L-L) Vac | | | | | |
| FREQUENCY | 40-70 Hz | | | | | |
| BYPASS VOLTAGE | -20 (-10/-15/-30 selectable) / +15% (10/20/25 selectable) Vac | | | | | |
| POWER FACTOR | ≥0,99 | | | | | |
| THDI | ≤3 % | | | | | |
| PHASES | 3+N+PE | | | | | |
| OUTPUT | | | | | | |
| POWER | 60 | 80 | 100 | 120 | 160 | 200 |
| POWER FACTOR | 1 | | | | | |
| VOLTAGE | L-N: 220/230/240±1%; L-L: 380/400/415±1% Vac | | | | | |
| FREQUENCY | 50/60±0,1 Hz | | | | | |
| PHASES | 3+N+PE | | | | | |
| THD | THDv<1% at linear load, THDv<3% at non-linear load | | | | | |
| VOLTAGE STABILIZATION | ≤2% at full unbalanced load | | | | | |
| WAVEFORM | Pure sine wave | | | | | |
| EFFICIENCY | 97% | | | | | |
| OVERLOAD | ≤130%: long run; 130%< load ≤150%: 5min; 150%< load ≤200%: 1s; 200%< load≤300%: 100ms; >300%: immediately. | | | | | |
| BATTERIES | | | | | | |
| BATTERIES VOLTAGE | ±168 - ±288 adjustable | | | | | |
| STANDARD BATTERIES CONFIGURATION | External | | | | | |
| MAX. CHARGING CURRENT | 30 A | | | 60 A | | |
| OTHER SPECIFICATIONS | | | | | | |
| COMMUNICATIONS | RS485, MODBUS, Free Contact Card (SNMP optional) | | | | | |
| DISPLAY | Touch screen+LED | | | | | |
| ALARMS | Low batteries, Anormal input, Overload, Block/Fault ecc. | | | | | |
| PROTECTION | Low batteries, Overload, Short-circuit, Over-temperature ecc. | | | | | |
| NOISE | <65 dB | | | | | |
| TEMPERATURE | 0 - +40 °c | | | | | |
| HUMIDITY | 0 – 95% | | | | | |
| DIMENSIONS (LXWXH) | 400x960x1200 mm | | | 600x1000x1600 mm | | |
| WEIGHT | 145 kg | 161 kg | 171 kg | 372 kg | 320 kg | |
| CERTIFICATES | | | | | | |
| STANDARDS | CE (Reference standards: Safety IEC EN 62040-1; EMC IEC EN 62040-2; Classification IEC EN 62040-3) | | | | | |

GET IN TOUCH

albat@albat.ba
www.albat.ba

Albat d.o.o. Sarajevo
Pavla Lukača 7, 71000 Sarajevo, B&H

tel.: +387 33 764 075, 764 076
fax.: +387 33 764 077

